



*Grade Level: Grade 2*

*Title:*

## **Fossils & Imprinted by Our Creator**

*Denomination: Christian*

*Lesson ID: LS-G2-06-CH*

**Contact Info:**

Exploring the World, Discovering God (EWDG)  
Institute for Theological Encounter with Science & Technology (ITEST)  
20 Archbishop May Drive, Suite 3400A  
St. Louis, MO 63119

EWDG email: [EWDG-Info@creationlens.org](mailto:EWDG-Info@creationlens.org)

EWDG web site: [www.creationlens.org](http://www.creationlens.org)

ITEST web site: [www.faithscience.org](http://www.faithscience.org)

Ph: 314.792.7220

***Note: Web sites referenced in this lesson were valid at time of publication.***

Copyright by Exploring the World, Discovering God (EWDG), a pilot program of Institute for Theological Encounter with Science & Technology (ITEST). All rights reserved. The contents, or parts thereof, i.e., lessons/modules, may be reproduced for classroom educational use only. Any reprinting or reproducing for the purpose of sale is prohibited, and if done, party is subject to all legal sanctions.

© ITEST © EWDG



## LIFE SCIENCE MODULE – GRADE TWO - CHRISTIAN LESSON 6 Fossils and We are imprinted with God our Creator.

**GENERAL CONCEPT:** Fossils and We are imprinted with God our Creator.

### SCIENCE LESSON CONCEPT

What are fossils?

### GOAL OF SCIENCE LESSON

- 1) Student will be able to correctly use the term “fossil”
- 2) Student will know how fossils are formed.

### OUTCOME EXPECTED

Student will be more respectful of fossils and things from the past.

### MATERIALS NEEDED

- Fossils of plants and animals, if available  
The State Conservation department or Natural Resources Department may lend fossils for classroom use. Pictures if no real fossils.

### RELIGION LESSON CONCEPT

God is ageless. We are imprinted with God, our Creator.

### GOAL OF RELIGION LESSON

The student will know that they have God’s imprint on their heart and soul since He made them.

### OUTCOME EXPECTED

Student will have respect and appreciation for God’s plan for all His creatures.

### MATERIALS NEEDED

- Fossils of plants and animals, if available.  
The state Conservation Department or Natural Resources Department may lend fossils for classroom use.

- sand
- water
- sandstone
- clay
- paper plates
- leaves
- Science Journal Page: Fossils
- Pencils

#### SCIENCE METHODOLOGY

- **USE** the Science Journal Page: FOSSILS to record what they observe while observing and examining the fossils – either real or pictures.
- **TALK** about how fossils are made.
- **HAVE** the student make leaf imprints to represent the fossils. Use the paper plates, sand, water, or clay.
- **ASK:** What do fossils tell us about the past?
- **HAVE** the student record this information on Science Journal Page.
- **STUDENT** records the step by step process in making leaf imprints.

- Hand tracing
- Paper
- Crayon/markers
- Pencil
- Scissors
- Glue
- Large paper: GOD’S IMPRINTS

#### RELIGION METHODOLOGY

- **SHOW** the students the fossils or pictures of fossils.
- **ASK:** What do fossils tell us about the past?
- **RECORD** answers on the board.
- **HAVE** the student trace one hand on paper.
- **HAVE** the student create a poem about God’s imprint on them.
- **HAVE** the student carefully cut out the hand poem
- **GLUE** the hand poem to a larger paper: God’s Imprints.

**POSIT:** Fossils are imprint made by plants and animals in the soil and put under pressure.

- **DISPLAY** the project.
- **POSIT:** Because we are made by God, we each carry the mark of the Creator.

## RESOURCES, LINKS AND COMPUTER LESSONS.

### Science Links

(Teacher) Teacher information on using activities to teach about fossils.

<http://www.web.ukonline.co.uk/conker/fossils>

(Student) Site answers student's questions about fossils.

<http://www.childrensmuseum.org/geomysteries/faqs.html>

(Parent and student) Activity to make your own fossils.

<http://www.school.familyeducation.com/fossils/dinosaurs/38338.html>

(Teacher) <http://sfscience.com>

### Religious Links

(Student) On-line video explaining God's plan for us. Really good!

[http://www.kidzplace.org/site/c.chJKJXOAJIH/b.324930/k.9E63/Gods\\_Special\\_Plan.htm](http://www.kidzplace.org/site/c.chJKJXOAJIH/b.324930/k.9E63/Gods_Special_Plan.htm)

(Student) Click and drag interactive story of God's Plan – Click on Show and Tell.

[http://www.kidzplace.org/site/c.chJKJXOAJIH/b.324926/k.1F0/Show\\_Tell.htm](http://www.kidzplace.org/site/c.chJKJXOAJIH/b.324926/k.1F0/Show_Tell.htm)

**KEY WORDS**  
**LIFE SCIENCE – GRADE TWO – LESSON 6 - CH**



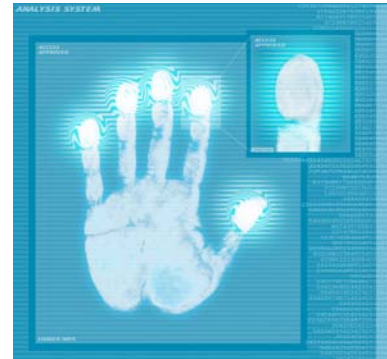
**FOSSIL**

**IMPRINT**

**PLANT**

**ANIMAL**

**PAST**



**AGELESS**

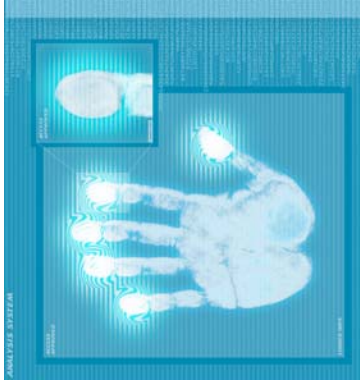
**GOD'S PLAN**

**PERSON**

**TRACE**

**CREATOR**

**KEY WORDS**  
**LIFE SCIENCE – GRADE TWO – LESSON 6 - CH**



**FOSSIL**

**AGELESS**

**IMPRINT**

**GOD'S PLAN**

**PLANT**

**PERSON**

**ANIMAL**

**TRACE**

**PAST**

**CREATOR**